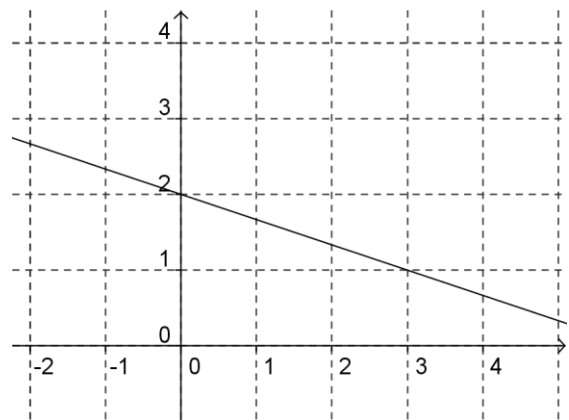
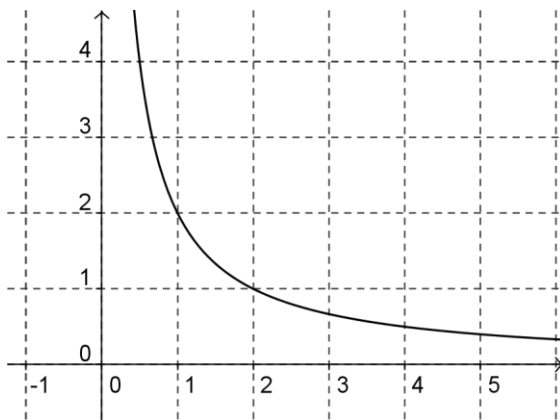


Riconoscere funzioni dal loro grafico

Per ognuno dei seguenti grafici riconosci quale funzione reale è stata rappresentata scegliendo tra le quattro proposte.



$x \mapsto \frac{1}{2}x + 2$

$x \mapsto \frac{1}{x}$

$x \mapsto \frac{1}{3}x + 2$

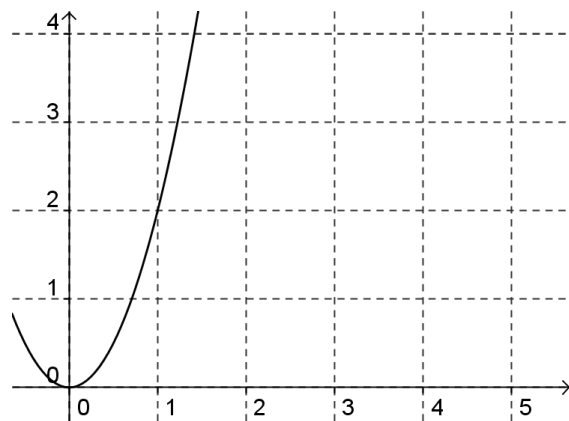
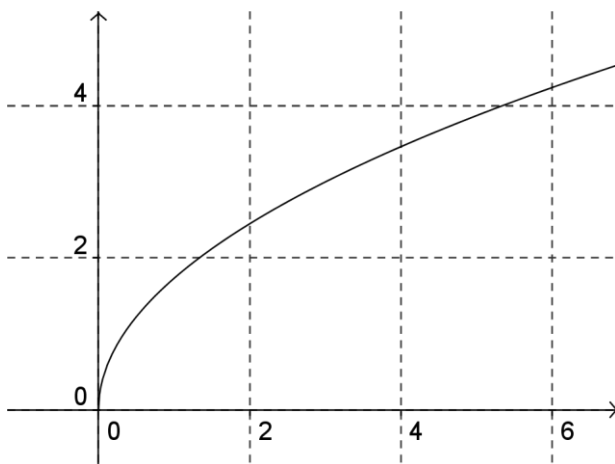
$x \mapsto 2x - 1$

$x \mapsto \frac{1}{2x}$

$x \mapsto \frac{2}{x}$

$x \mapsto -\frac{1}{3}x + 2$

$x \mapsto -\frac{x}{3} - 2$



$x \mapsto \sqrt{x}$

$x \mapsto \frac{x^2}{2}$

$x \mapsto x^2 + 1$

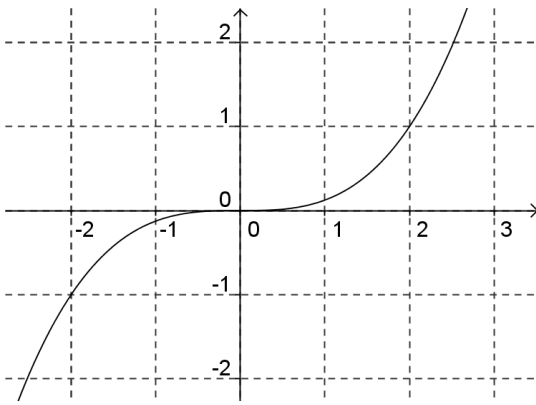
$x \mapsto 2x^2$

$x \mapsto \sqrt{3x}$

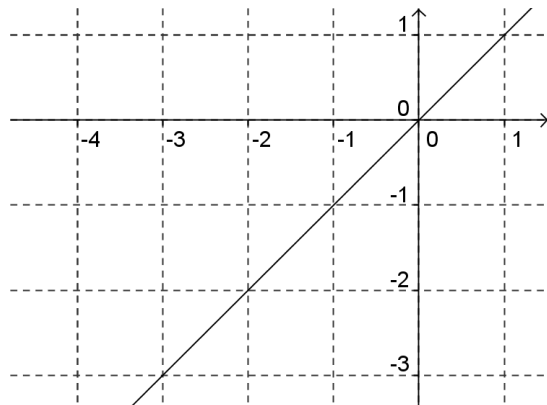
$x \mapsto \sqrt{3}x$

$x \mapsto x^3$

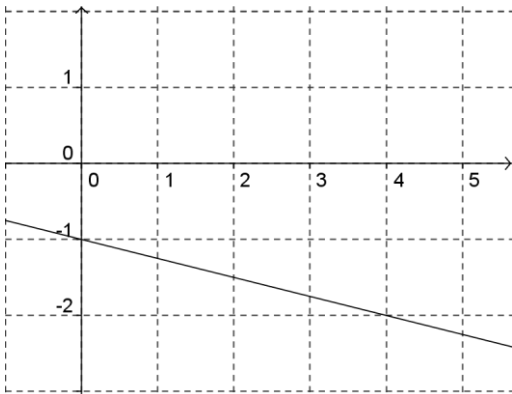
$x \mapsto x^2 - x$



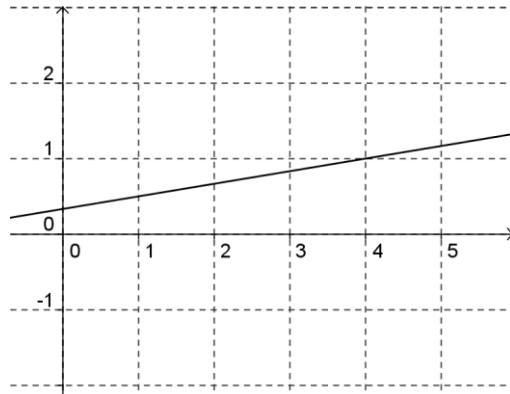
- $x \mapsto \frac{1}{2}x^3$ $x \mapsto \left(\frac{x}{2}\right)^2$
 $x \mapsto \frac{1}{2x^3}$ $x \mapsto \left(\frac{x}{2}\right)^3$



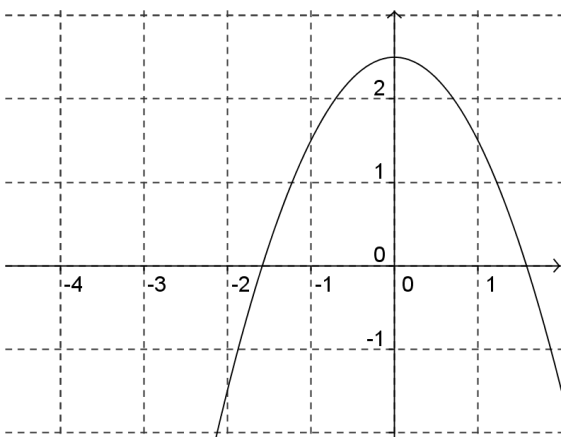
- $x \mapsto x$ $x \mapsto \frac{1}{x}$
 $x \mapsto -x$ $x \mapsto -1$



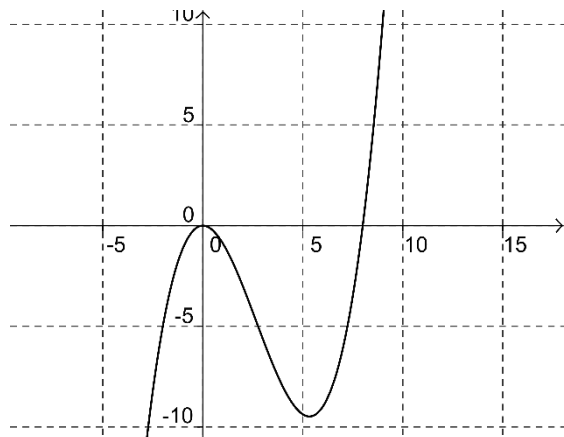
- $x \mapsto -\frac{1}{3}x - 1$ $x \mapsto x - 1$
 $x \mapsto -\frac{x}{4} - 1$ $x \mapsto -\frac{1}{4}x - 1$



- $x \mapsto \frac{1}{5}x + \frac{1}{2}$ $x \mapsto \frac{1}{6}x + \frac{1}{3}$
 $x \mapsto 4x - \frac{2}{3}$ $x \mapsto \frac{1}{4}x + \frac{1}{3}$



- $x \mapsto -2x^2$ $x \mapsto -\frac{x^2}{2} + 2,5$
 $x \mapsto -x^2 + \frac{5}{2}$ $x \mapsto x^2 - \frac{5}{2}$



- $x \mapsto x^3 - x^2$ $x \mapsto \left(\frac{x}{2}\right)^3 - x^2$
 $x \mapsto x^2 - x^3$ $x \mapsto x^3 - \frac{1}{2}x^2$